

Quadro – Stufenbohrer

Quadro – Foret étagé

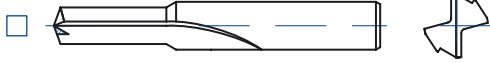
Quadro – Punta a diametri multipli

Quadro – Step drill

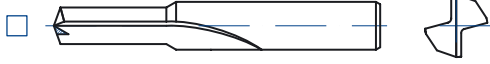
52150 – Quadro 15



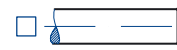
52200 – Quadro Plus



52000 – Quadro



Form HA



Form HAK



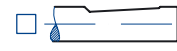
Form HB



Form HBK



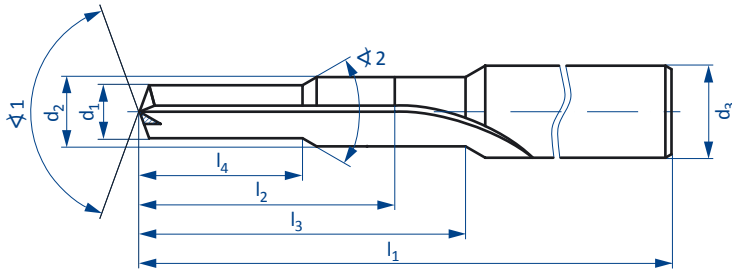
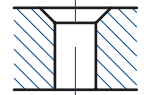
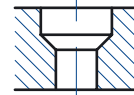
Form HE



Form HEK



Bohrungsart:
Type of hole:



$d_1 =$ _____ Tol. = _____ $\angle 1 =$ _____ | $l_1 =$ _____ $l_3 =$ _____

$d_2 =$ _____ Tol. = _____ $\angle 2 =$ _____ | $l_2 =$ _____ $l_4 =$ _____

$d_3 =$ _____ Tol. = _____

Kühlmittelzuführung
Coolant

mit Innenkühlung
with internal coolant

ohne Innenkühlung
without internal coolant

Zu bearbeitender Werkstoff
Material to be cut

Schneidrichtung
Direction of cutting

rechts
right hand

links
left hand

Beschichtung
Coating

keine
without

Stückzahl
Quantity

Anfrage
Enquiry

Bestellung
Order

Bemerkung
Remarks

Firma
Company

Strasse/Nr.
Street/No.

Postleitzahl/Ort
ZIP-Code/City

Phone

Kontaktperson
Contact

Fax

Datum/Unterschrift
Date/Signature

E-Mail
